

EXTREME

PROUDLY ALUMINIUM **Boats**

- USER MANUAL -



EXTREME

PROUDLY ALUMINIUM **Boats**



REPUTATION - NZ's most awarded Aluminium Boat



BUILD INTEGRITY - CPC certified



SAFETY - Underfloor buoyancy chambers



STABLE - Self flooding keel



DRY - Large reverse chines



QUALITY - Built from start to finish on site



NEW ZEALAND'S MOST AWARDED ALUMINIUM BOATS

WWW.EXTREMEBOATS.CO.NZ

FREQUENTLY ASKED QUESTIONS 2

MAINTENANCE & CLEANING TIPS 7

CARING FOR SEADEK 9

CANVAS CARE 11

MINN KOTA CARE 12

TRAVELLING WITH YOUR EXTREME BOAT 16

LOWERING BIMINI FRAME 18

STONE CHIP COVER 19

OWNERS NOTES 20

FREQUENTLY ASKED QUESTIONS



HOW MANY BUNGS DOES MY BOAT HAVE AND WHERE ARE THEY LOCATED?

GAME KING / WALK AROUND / SPORT FISHER MODELS HAVE 6X BUNGS, 3X BUNGS UNDER THE TRANSM, 1X BUNG IN THE LIVE BAIT TANK, 1X BUNG IN CENTRE UNDER FLOOR STORAGE, 1X BUNG IN THE TOILET AREA (UNDER CENTRE SQUAB).

CENTRE CONSOLE MODELS HAVE 7X BUNGS, 3X BUNGS UNDER THE TRANSM, 1X BUNG IN THE LIVE BAIT TANK, 2X BUNGS IN REAR UNDER FLOOR STORAGE, 1X BUNG IN FRONT UNDERFLOOR STORAGE.



HOW DO I USE MY TRIM TABS?

HOW DO I TRIM THE MOTOR?

PLEASE SPEAK WITH YOUR DEALER AS THEY WILL TALK YOU THROUGH THE DIFFERENT SCENARIOS WITH USING THE TRIM ON YOUR ENGINE AND TRIM TABS ACCORDING TO YOUR BOAT AND MOTOR.



WHERE IS MY BATTERY ISOLATION SWITCH?

YOUR BATTERY SWITCH IS LOCATED IN THE REAR HATCH IN THE TRANSM. WHEN TURNING BATTERY ISOLATOR ON, TURN RIGHT TO "ON". IF BATTERY LEVELS ARE LOW YOU CAN TURN IT FURTHER TO RIGHT TO "COMBINE" BOTH BATTERIES. THE BATTERIES SHOULD BE SWITCHED OFF WHEN YOU HAVE FINISHED USING YOUR BOAT FOR THE DAY.



**WHERE IS MY DROP-IN
TRANSOM DOOR LOCATED?**

YOUR DROP-IN TRANSOM DOOR IS LOCATED UNDER THE TRANSOM ON THE STARBOARD SIDE.



**MY NYALIC IS GETTING
MARKS ON IT, WHAT SHOULD
I DO?**

TO REMOVE THESE MARKS GET TWO BITS OF WELL WASHED TOWELLING, MAKING THEM INTO PADS. WET BOTH WITH SOME XYLENE (THIS CAN BE PURCHASED FROM BUNNINGS - MADE BY DIGGERS). USING ONE RAG, WIPE THE AFFECTED AREA, IT WILL THEN SOFTEN THE NYALIC. USING THE SECOND RAG, WIPE AGAIN BUT THIS TIME TURN THE RAG – THE DIRTY MARK WILL COME OFF THE SURFACE JUST ABOUT INSTANTLY.

WHAT CAUSES MARKS ON NYALIC?

SUNSCREEN! SUNSCREEN CAN PERMANENTLY DAMAGE YOUR NYALIC AND PAINT.

PETROL AND ANY SOLVENT BASED PRODUCTS CAN DAMAGE YOUR NYALIC.



HOW DO I USE THE LIVE BAIT TANK?

TO FILL YOUR LIVE BAIT TANK YOU WILL NEED TO OPEN THE DECK WASH AERATOR TAP. TURN ON THE DECK WASH PUMP TO FILL THE TANK. ONCE THE TANK IS FULL TURN OFF THE DECK WASH PUMP. IF YOUR BOAT IS FITTED WITH AN AERATOR PUMP, THIS CAN BE SWITCHED ON TO CIRCULATE THE WATER TO ALLOW YOUR LIVE BAIT TO RECEIVE OXYGEN, KEEPING THEM ALIVE FOR LONGER.



FREQUENTLY ASKED QUESTIONS



WHEN LOADING MY BOAT ONTO THE TRAILER, HOW FAR INTO THE WATER SHOULD I GO?

PLEASE SPEAK TO YOUR DEALER AS THIS CAN VARY FROM BOAT TO BOAT AND THE DIFFERENT GRADIENTS OF BOAT RAMPS.

I WANT TO ADD AN AFTERMARKET PRODUCT TO THE BOAT, WHAT IS THE CORRECT PROCEDURE SO I DON'T AFFECT THE PAINT?

WHEN DRILLING THE HOLES, ENSURE SUITABLE ETCH PRIMER IS USED, ISOLATE WITH EITHER A PLASTIC OR FIBRE WASHER BUSH TO ENSURE METALS ARE NOT TOUCHING AND REACTING.

HOW DO I CLEAN MY CORNER PERSPEX WINDOWS?

START WITH RINSING WITH FRESH WATER USING A MILD DETERGENT AND A SOFT CLOTH TO REMOVE SALT RESIDUE. THE PERSPEX (CURVED WINDOWS) CAN BE POLISHED WITH VUPLEX AFTER CLEANING. IF THERE ARE LIGHT SCRATCHES ON THE PERSPEX, LIKE A CAR YOU CAN ALSO USE A CAR POLISH TO GET THESE SCRATCHES OUT. THE MAIN THING TO AVOID IS CLEANERS THAT ARE CITRUS BASED OR PRODUCTS WITH AMMONIA IN THEM, THEY WILL RUIN THE PERSPEX ALMOST IMMEDIATELY.



VUPLEX CAN BE PURCHASED FROM YOUR LOCAL BUNNINGS.

DO NOT USE RAINEX.

HOW DO I CLEAN MY CENTRE WINDSCREEN AND SIDE WINDOWS?

START WITH RINSING WITH FRESH WATER, USING A MILD DETERGENT AND A SOFT CLOTH TO REMOVE SALT RESIDUE.

RAINEX CAN BE USED.

TO KEEP THE SLIDING WINDOWS MOVING FREELY, SILICONE SPRAY OUTSIDE AND INSIDE OF THE HARDTOP SLIDING WINDOWS BETWEEN GLASS AND RUBBER.



WHERE IS THE TOUCH UP PAINT LOCATED?

THE TOUCH UP PAINT IS LOCATED IN THE NEOPRENE BAG IN YOUR GLOVE BOX. PLEASE NOTE, IF YOUR BOAT DOES NOT HAVE A GLOVE BOX, IT WILL BE LOCATED IN A DRAWER.

WHAT DO I DO IF I GET WATER IN THE BUOYANCY TANK?

ONCE THE BOAT IS OUT OF THE WATER, PUT A FRESHWATER HOSE IN TO THOROUGHLY RINSE AND ALLOW TO AIR DRY FOR AS LONG AS POSSIBLE BEFORE SECURELY FASTENING THE BUNGS. THESE BUOYANCY CHAMBERS SHOULD BE AIRTIGHT DRY. IF YOU FIND WATER IN THEM PLEASE CONTACT YOUR NEAREST DEALER.

WHERE ARE MY FUSES LOCATED?

MOST FUSES ARE LOCATED BEHIND THE DASH. YOU WILL NEED TO REMOVE THE COVER PLATE BEHIND THE DASH TO ACCESS THEM. BEFORE CHECKING FUSES, THE CIRCUIT BREAKERS BEHIND THE LABEL ON THE SWITCH PANEL SHOULD BE CHECKED.



HOW DO I CLEAN MY WINCH ROPE?

IF YOUR BOAT HAS A DRUM WINCH, YOU WILL BE ABLE TO USE YOUR FRESHWATER HOSE TO FORCE WATER DOWN FROM THE TOP. THIS WATER WILL DRAIN THROUGH THE FLOODING KEEL.

IF YOUR BOAT HAS AN RC6 OR RC8 WINCH, YOU WILL NEED TO TAKE YOUR FRESHWATER HOSE THROUGH THE CABIN AND OPEN THE HATCH IN THE FORWARD CABIN BULKHEAD TO THOROUGHLY RINSE THE ROPE. THIS WATER WILL DRAIN THROUGH THE FLOODING KEEL.

ALL WINCH MECHANICAL PARTS ARE RECOMMENDED TO BE REGULARLY GREASED AND CLEANED OF ANY SALT RESIDUE. ON EACH SERVICE OF YOUR BOAT, IT IS RECOMMENDED YOU ASK FOR YOUR WINCH TO BE GREASED, AS WITH SOME SERVICE CENTRES THIS IS NOT PART OF A GENERAL SERVICE.

FREQUENTLY ASKED QUESTIONS

HOW DO I USE MY ELECTRIC TOILET IN CABIN?

IF YOUR BOAT IS FITTED WITH AN ELECTRIC TOILET, WHEN READY FOR USE, YOU WILL NEED TO FOLLOW THESE STEPS.

1. TURN ON BOTH TAPS, LOCATED EITHER SIDE, TO ALLOW TOILET TO FILL.
2. USE THE TOILET.
3. FLUSH THE TOILET.
4. TURN OFF INTAKE TAP.
5. FLUSH UNTIL WATER HAS DISAPPEARED.
6. TURN OFF OUTLET TAP.

DO NOT LEAVE TAPS ON WHEN NOT IN USE.



WHERE ARE MY TIE DOWN LUGS FOR WHEN I AM TRAVELLING WITH MY BOAT?

THE TIE DOWN LUGS ARE LOCATED BENEATH THE SWIM STEP ON THE TRIM TAB MOUNTING PLATES, ENABLING THE BOAT TO BE FASTENED TO THE TRAILER WHILE TOWING. ENSURE BOW IS WINCHED UP TIGHTLY.



- DO NOT OVERFILL FUEL TANK. DO NOT STORE YOUR BOAT WITH A FULL TANK OF FUEL AS HEAT WILL CAUSE EXPANSION CAUSING FUEL SPILLAGE, WHICH WILL DAMAGE SEADEK AND PAINT.
- ENSURE BOAT IS ALWAYS STORED LEVEL.
- ENSURE GREASING OF WINCHES (MOVING PARTS), LATCHES, MOVING SEAT BASES, BOW SPRIT PINS & ROLLERS WITH A PRODUCT SUCH AS PROLAN. A FABRIC SOFTENER CAN BE USED ON THE ROPE.
- ENSURE YOU ARE WASHING THE ANCHOR WELL OUT, YOU CAN DO THIS BY RUNNING FRESH WATER THROUGH THE ANCHOR WELL. THIS WATER WILL DRAIN OUT THE FLOODING KEEL.
- AFTER USING THE BOAT, IT IS RECOMMENDED THE BOAT IS THOROUGHLY WASHED WITH A PRODUCT SUCH AS SALT AWAY, WHICH WILL REMOVE THE SALT. YOU CAN THEN LIGHTLY SPONGE IT AROUND THE DASH AREA TO REMOVE ANY SALT. TO MAINTAIN THE SHINE ON THE PAINT, WE RECOMMEND USING A CAR WASH TO FINISH OFF.
- ENSURE THE BILGE AREA IS CLEAR OF ALL FOREIGN OBJECTS, AND IS CLEANED THOROUGHLY.
- AFTER USING THE BOAT, IT IS RECOMMENDED WHILE WASHING THE BOAT, TO PUT A FRESH WATER HOSE UP THE WATER PICK-UP INLET (LOCATED UNDER THE HULL AT THE STERN NEXT TO THE FLOODING KEEL). TURN ON THESE ACCESSORIES. THIS WILL FLUSH YOUR WASHDOWN PUMP / KNEE HAND WASH AND TUNA TUBE PUMPS.
- PAINT TOUCH UP BOTTLES PROVIDED SHOULD BE USED TO TEMPORARILY SEAL MINOR SCRATCHES AND CHIPS UNTIL THEY ARE ABLE TO BE PROFESSIONALLY TOUCHED UP.
- IF YOUR PAINT HAS ANY DEEP SCRATCHES, IT IS RECOMMENDED TO BE LOOKED AT BY A PROFESSIONAL AND TOUCHED UP TO AVOID ANY FURTHER DAMAGE TO THE PAINT. DEPENDING ON THE SIZE AND DEPTH OF THE SCRATCH, IT MAY BE POSSIBLE TO TOUCH UP WITH THE TOUCH UP PAINT PROVIDED.

MAINTENANCE & CLEANING TIPS



- IF YOU WOULD LIKE TO ADD AFTER MARKET PARTS ONTO THE BOAT, ANY STAINLESS STEEL FITTINGS NEED TO BE ISOLATED WITH PLASTIC OR FIBRE WASHER BUSHES TO PREVENT ANY CORROSION AND ELECTROLYSIS. PLEASE NOTE: ONCE YOU HAVE FITTED ANY AFTERMARKET PARTS, IF IT CAUSES CORROSION THIS WILL NOT BE COVERED UNDER WARRANTY.

- IT IS ADVISED TO CHECK YOUR ENGINE MANUALS TO FOLLOW THEIR INSTRUCTIONS ON HOW TO FLUSH THE ENGINE AS SOME ENGINES REQUIRE THE USE OF MUFFS AND OTHERS DO NOT.

- THE FOLLOWING PRODUCTS ARE RECOMMENDED FOR THE USE OF CLEANING:
 - SALT AWAY, FOR THE ALL OVER USE OF REMOVING SALT, FOLLOWED BY A GOOD QUALITY CAR WASH.

 - GLASS CLEANER OR RAINEX IS RECOMMENDED ON THE GLASS, FOLLOWED BY A BUFF WITH A MICROFIBRE CLOTH.

 - VUPLEX IS RECOMMENDED ON THE PERSPEX. DO NOT USE HARSH CLEANERS.

 - BRELLA GUARD IS RECOMMENDED TO REPROOF AND PROLONG THE LIFE OF YOUR CANVAS.

 - BRELLA GUARD IS RECOMMENDED FOR RE PROOFING CANVAS.

 - DISHWASHING LIQUID OR LEATHER/VINYL CLEANER, TO CONDITION VINYL SEATING IS RECOMMENDED WHEN CLEANING SQUABS AND SEATING.

 - PROLAN IS RECOMMENDED FOR GREASING MOVING PARTS.

 - A NUMBER OF HOUSEHOLD PRODUCTS CAN BE USED FOR CLEANING SEADEK, SUCH AS DEK MAGIC, SPRAY 'N WIPE, SIMPLE GREEN AND SUGAR SOAP. DO NOT USE ANY ACID BASED PRODUCTS.

STORAGE

THE PREFERRED METHOD OF STORAGE IS THAT THE BOAT (OR ANY OTHER SURFACE OF APPLICATION) BE COVERED. SEADEK PADS ARE VERY DURABLE, BUT WHEN EXPOSED TO THE ELEMENTS 24/7 THE COLOURS WILL SLOWLY FADE. GOOD PRACTICES INCLUDE: KEEPING THE BOAT IN A GARAGE, COVERED WITH A CANVAS BOAT COVER, IN A COVERED BOAT SLIP, ETC.



SITUATIONS TO AVOID

AVOID PLACING SEADEK ADJACENT TO REFLECTIVE SURFACES. IN ADDITION, AVOID LEAVING INFLATABLE POOL TOYS, WATER BOTTLES, GLASS, OR OTHER REFLECTIVE SURFACES ON OR NEAR SEADEK FOR EXTENDED AMOUNTS OF TIME. THESE OBJECTS CAN REFRACT/ REFLECT LIGHT, THEREBY CONCENTRATING THE BEAMS TO A LEVEL WHICH CAN BE DAMAGING TO THE MATERIAL.

HOW TO CLEAN SEADEK

FOR REMOVING DIRT, FOOTPRINTS, SUNSCREEN, FISH BLOOD, RUST, AND OTHER HARD TO CLEAN RESIDUES FROM YOUR SEADEK, A NUMBER OF HOUSEHOLD PRODUCTS CAN BE USED FOR CLEANING SEADEK, SUCH AS SPRAY 'N WIPE, SIMPLE GREEN AND SUGAR SOAP. DO NOT USE AN ACID BASED PRODUCT.

FOR BEST RESULTS, USE YOUR CHOICE OF PRODUCT TO LIBERALLY COVER THE AREA NEEDING TO BE CLEANED. WITH A MEDIUM BRISTLED BOAT BRUSH, LIGHTLY WORK THE PRODUCT IN. LET THE CLEANER SIT FOR 3-5 MINUTES, THEN USE WATER TO DAMPEN THE AFFECTED AREA AND LIGHTLY SCRUB THE AREA FOR A SECOND TIME. RINSE THE CLEANER OFF THOROUGHLY AND DRY WITH A CLEAN TOWEL. IF YOU ENCOUNTER A STUBBORN STAIN, REPEAT THESE STEPS AS NEEDED.

1. TO CLEAN DIRT, FOOTPRINTS, ETC. FROM YOUR SEADEK, USE AN ALL-PURPOSE CLEANER, DEGREASER, OR DISH SOAP, ALONG WITH WARM WATER AND A MEDIUM BRISTLED BRUSH. THOROUGHLY WORK THE SOAPY MIXTURE INTO THE SEADEK UNTIL DIRT, ETC. COMES UP. RINSE WITH CLEAN WATER AND REPEAT IF NECESSARY.



AVAILABLE
FOR
PURCHASE

CARING FOR SEADEK



2. TO REMOVE SUNSCREEN, USE THE ALL-PURPOSE CLEANER OR DEGREASER ALONE WITH A MEDIUM BRISTLED BRUSH. PUT SMALL AMOUNT OF THE CLEANER ON THE OIL STAIN AND USE A MEDIUM BRISTLED BOAT BRUSH AND WARM WATER TO SCRUB UNTIL THE OIL IS OUT. RINSE WITH CLEAN WATER AND REPEAT IF NEEDED.
3. TO REMOVE FISH BLOOD, MIX 1 CUP OF BLEACH WITH 1 GALLON OF WARM WATER. USING A SOFT BRISTLED BRUSH, SCRUB IN A CIRCULAR MOTION UNTIL THE FISH BLOOD IS UP. RINSE THOROUGHLY WITH CLEAN WATER AND REPEAT IF NECESSARY. IF NOT EFFECTIVE, SEE STEP 4.
4. TO REMOVE RUST STAINS, USE A CAP FULL OF VINEGAR OR OXALIC ACID. APPLY ON THE RUST STAIN AND ALLOW TO SOAK FOR 3-5 MINUTES. IF NECESSARY, USE LATEX/NITRILE GLOVES TO MASSAGE THE CLEANER INTO THE TEXTURE OF THE SEADEK PAD. RINSE WITH WATER AND REPEAT IF NECESSARY. WHEN APPLYING OXALIC ACID, USE CARE TO AVOID GETTING ACID ON THE EDGES OF THE PAD, AS IT COULD DAMAGE THE LAMINATION OR PSA. PLEASE FOLLOW YOUR STATE AND/OR COUNTRY REGULATIONS FOR PROPER CHEMICAL HANDLING. WEAR VINYL OR NITRILE GLOVES AND EYE PROTECTION WHEN NECESSARY.

USE WITH CARE

ACETONE (IF IT MUST BE USED, AVOID THE ADHESIVES AS BEST AS POSSIBLE)

BLEACH (IF USED, DILUTE 1 CUP WITH 1 GALLON OF WATER) FOR BEST CLEANING RESULTS, TEND TO ALL STAINS, SPILLS AND LEAKS AS SOON AS POSSIBLE.

CARE INSTRUCTIONS / WARRANTY

PROPER CARE AND CLEANING SHOULD BE TAKEN TO ENSURE THE LIFE OF YOUR CANVAS ON YOUR EXTREME BOAT. FOR REGULAR CARE AND MAINTENANCE, EXCESSIVE DIRT SHOULD BE BRUSHED FROM THE CANVAS USING A SOFT BRISTLED BRUSH. CANVAS SHOULD THEN BE SPRAYED WITH WARM WATER (NOT EXCEEDING 100°F / 40°C) AND AIR DRIED. PERIODICALLY THE CANVAS SHOULD UNDERGO A MORE THOROUGH CLEANING. AGAIN BRUSH THE CANVAS WITH A SOFT BRISTLED BRUSH, SPRAY WITH WARM WATER, AND THEN APPLY A GENTLE NON-DETERGENT SOAP AND LET STAND FOR 10 TO 20 MINUTES BEFORE RINSING. RINSE THOROUGHLY AND AIR DRY. DO NOT USE DETERGENT. WE RECOMMEND 'DOVE PURE SENSITIVE SOAP' BUT DO NOT MIX TOO MUCH SOAP IN WATER.

SPORT FISHER

SHOULD HAVE BIMINI CANVAS AND CLEARS STOWED AWAY FOR ANY TRAVEL. ENSURE ALL LOCKING SCREWS ARE TIGHTENED BEFORE TRAVELLING.

GAME KING

IF YOU CHOOSE TO REMOVE THE REAR POP OUT BIMINI, PLEASE ENSURE THE BAR IS SECURELY PUSHED IN AND FASTENED WITH A CABLE TIE.

CANVAS CARRIES AN 8 YEAR MANUFACTURERS WARRANTY. WORKMANSHIP ON ALL CANVAS WORK CARRIES A 3 YEAR WARRANTY. FOR FURTHER DETAILS CONTACT EXTREME BOATS.

SPORT FISHER / CENTRE CONSOLE CLEARS

CLEAN WITH WATER ONLY AND A MICROFIBRE CLOTH. DO NOT USE PLEDGE, RAINEX, OR ANY PLEXIS STYLE CLEANERS. IF POSSIBLE, ALSO AVOID GETTING SALT AWAY ON THE CLEARS.

MINN KOTA CARE



CARE & MAINTENANCE FOR YOUR MINN KOTA



KEEP CLEAN AND LIGHTLY LUBRICATE.
GREASE, DUST AND SALT MIXED TOGETHER
WILL BE STICKY.



KEEP CLEAN AND LIGHTLY GREASE. TOO
MUCH GREASE WITH DUST AND SALT WILL
MEAN DIRT WILL BE ALL OVER THE MOTOR.



ALWAYS CLEAN, AND
IF POSSIBLE APPLY
A THIN COAT OF
DIELECTRIC GREASE
OR NON CONDUCTIVE
GREASE. IF NOT
CLEANED, THE
SHAFT WILL BECOME
DIRTY. DIRT ON THE
SHAFT WILL GET INTO



THE LIFT BELT AND WILL BE DEPOSITED INSIDE THE GEARS OF THE
TRIM, WHICH WILL SOON CAUSE DAMAGE TO THE TRIM MODULE.

REGULARLY CLEAN AND LIGHTLY LUBRICATE
THIS SENSOR ACTUATOR.



CALIBRATING YOUR MINN KOTA

PLEASE WATCH THE FOLLOWING YOUTUBE CLIP ON CALIBRATING YOUR MINN KOTA IF IT HAS YET TO BE CALIBRATED.

WWW.YOUTUBE.COM/WATCH?V=OZ9J6RR1DLW

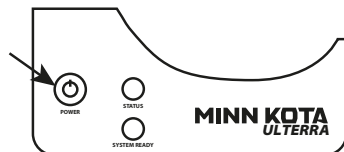
MANUAL STOW PROCEDURE - QUICK REFERENCE GUIDE

IN THE UNLIKELY EVENT THAT THE MOTOR WILL NOT STOW FROM EITHER THE REMOTE OR FOOT PEDAL COMMAND, THE FOLLOWING ALTERNATIVE STOW METHODS SHOULD SOLVE THE ISSUE:

1. ULTERRA TRIM / STOW RESET PROCEDURE

IN THE UNLIKELY EVENT THAT ULTERRA WILL NOT TRIM OR STOW, THE FOLLOWING PROCEDURE WILL RESET THE MOTOR AND RESTORE FUNCTIONALITY:

1. PRESS AND HOLD THE POWER BUTTON LOCATED AT THE MOUNTING BASE TO TURN POWER OFF (GREEN LED LIGHT WILL TURN OFF).
2. PRESS THE POWER BUTTON UNTIL THE GREEN LED LIGHT ILLUMINATES.
3. WAIT 3 SECONDS.
4. PRESS THE POWER BUTTON 3 TIMES WITHIN A 2 SECOND PERIOD.
5. RED AND GREEN LED LIGHTS WILL FLASH CONTINUOUSLY AND THE ULTERRA WILL GO THROUGH THE FOLLOWING AUTOMATED SEQUENCE:
 - MOTOR WILL POSITION ITSELF INTO THE PROPER ORIENTATION.
 - MOTOR WILL AUTOMATICALLY TRIM UP TO THE MOUNTING BASE AND TRIM DOWN APPROXIMATELY 6 INCHES.
 - THE FLASHING RED LED LIGHT WILL TURN OFF, AND THE FLASHING GREEN LED LIGHT WILL BECOME SOLID GREEN.



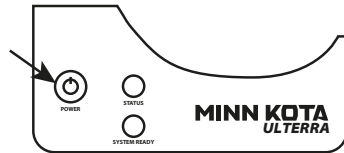
ULTERRA SHOULD NOW BE RESET AND FULLY FUNCTIONAL. IF ULTERRA DOES NOT RESET, REPEAT THE PROCEDURE. IF THE SECOND ATTEMPT FAILS, PLEASE CONTACT YOUR LOCAL AUTHORISED SERVICE CENTRE OR CALL MINN KOTA SERVICE AT (800)227-6433.

NOTE: IF THE LOWER UNIT OF THE MOTOR IS TRIMMED WITHIN 6 INCHES OF THE MOUNTING BASE AND THE BOAT HULL IS OBSTRUCTING THE MOTOR'S TURNING RADIUS, MANUALLY TURN THE HEAD OF THE MOTOR SO THAT THE LOWER UNIT IS PERPENDICULAR TO THE MOTOR RAMPS PRIOR TO BEGINNING THIS PROCEDURE.

2. STOWING FROM THE ULTERRA MOTOR

IN THE UNLIKELY EVENT YOUR I-PILOT OR I-PILOT LINK REMOTE BECOMES NON-FUNCTIONING, YOU CAN STOW THE ULTERRA FROM THE BASE OF THE MOTOR BY COMPLETING THE FOLLOWING SEQUENCE:

1. ENSURE THAT THE MOTOR IS ON.
2. PRESS AND HOLD THE POWER BUTTON LOCATED AT THE MOUNTING BASE FOR 10 SECONDS.
3. THE RED AND GREEN LEDs WILL FLASH ALTERNATELY, AND MOTOR WILL BEGIN STOW PROCESS.



3. MANUAL STOW PROCEDURE

IF YOUR BATTERIES LOSE POWER TO THE LEVEL THAT THE MOTOR WILL NOT STOW, THE MOTOR WILL MOST LIKELY STALL AT A 45 DEGREE ANGLE. IF THIS OCCURS, REENGAGE POWER, DEPLOY THE MOTOR, TRIM MOTOR TO ITS HIGHEST SETTING, AND TURN POWER OFF UNTIL BATTERIES CAN BE RECHARGED. ONCE BATTERIES ARE CHARGED, ATTEMPT TO STOW MOTOR AGAIN.

IF ALL THREE ALTERNATIVE METHODS HAVE BEEN TRIED AND THE MOTOR WILL STILL NOT STOW, THERE IS A METHOD TO MANUALLY STOW THE MOTOR.

HOWEVER, ONCE THE MOTOR HAS BEEN MANUALLY STOWED, IT WILL BE NON-OPERATIONAL UNTIL IT IS MANUALLY RESET BY AN AUTHORISED SERVICE CENTRE.

IF A MANUAL STOW MUST BE DONE, FOLLOW THE INSTRUCTIONS BELOW:

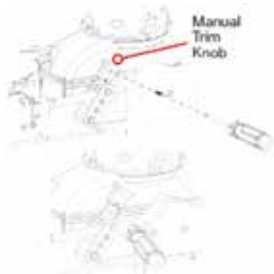
STEP 1

REMOVE RIGHT HAND SIDEPLATE USING A PHILLIPS SCREWDRIVER.



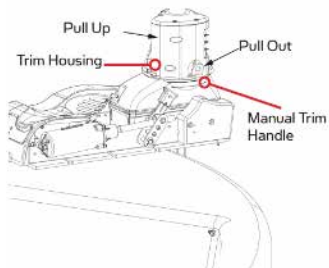
STEP 2

USING A PHILLIPS SCREWDRIVER, LOOSEN THE SCREW ON THE MANUAL TILT KNOB AND THEN PRY UP WITH A FLAT BLADE SCREWDRIVER UNTIL IT RELEASES FROM THE METAL PLATES.



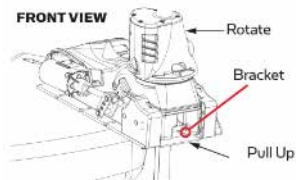
STEP 3

PULL MANUAL TRIM HANDLE OUT WHILE LIFTING UP ON THE TRIM HOUSING UNTIL SHAFT AND TRIM MODULE CAN BE PULLED UP BY HAND.



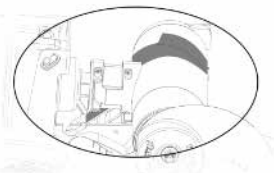
STEP 4

WHILE PULLING UP ON THE BRACKET TO RELEASE THE LATCH PIN, ROTATE AND PULL THE LOWER UNIT ONTO THE RAMPS.



STEP 5

SECURE LOWER UNIT ONTO THE RAMPS USING THE PROVIDED EMERGENCY STRAP. THE D-RING ON THE EMERGENCY STRAP CAN BE HOOKED INTO THE BASE AS SHOWN. THIS FEATURE IS LOCATED ON THE LEFT SIDE OF THE MOTOR AS VIEWED FROM THE BOAT INTERIOR.

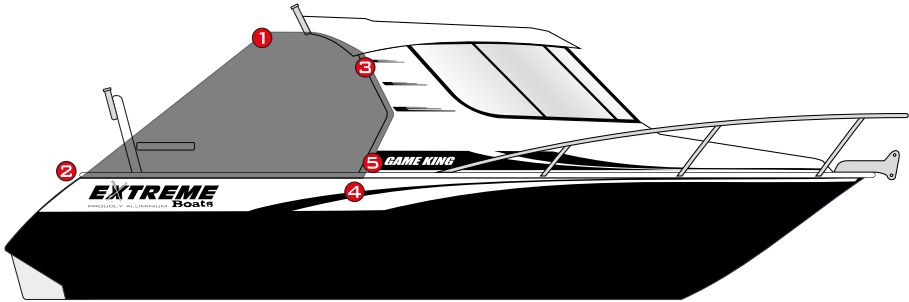


TRAVELLING WITH YOUR EXTREME BOAT

EXTREME
PROUDLY ALUMINIUM Boats

ATTACHING THE ROAD COVER

1. ZIP ROAD COVER TO BIMINI OR CANVAS ZIP PANEL PROVIDED.
2. PLACE BUNGY LOOPS OVER TRANSOM BUNGY BUTTONS.
3. DOME HARDTOP SIDE.
4. DOME UNDER GUNNEL.
5. DOME CABIN.
6. ATTACH ALL REMAINING DOMES.
7. CLOSE ZIPS ON DOOR.



IMPORTANT: ENSURE COVER IS FULLY ATTACHED AND ZIPPED FOR TRAVEL.

SPORT FISHER

WHILE TRAVELLING ON THE OPEN ROAD, YOUR CANVAS BIMINI MUST BE REMOVED OR THE BIMINI FRAME FOLDED.

IF YOU ARE ONLY REMOVING THE CANVAS, ENSURE YOU USE THE TIE DOWN STRAPS SHOWN IN THE ADJACENT PHOTO WHILE TRAVELING.

ALL BAIT BOARD INSERTS ARE RECOMMENDED TO BE REMOVED WHILE TRAVELLING.



GAME KING / WALK AROUND

WHILE TRAVELLING ON THE OPEN ROAD, YOUR REAR POP OUT BIMINI SHOULD HAVE THE CANVAS REMOVED AND THE BIMINI BAR PUSHED IN AND SECURED WITH A TIE DOWN, SO IT DOESN'T RATTLE OUT.

YOU ARE ABLE TO TRAVEL ON THE OPEN ROAD WITH YOUR ROAD COVER, BUT ENSURE ALL FASTENINGS ARE SECURE.

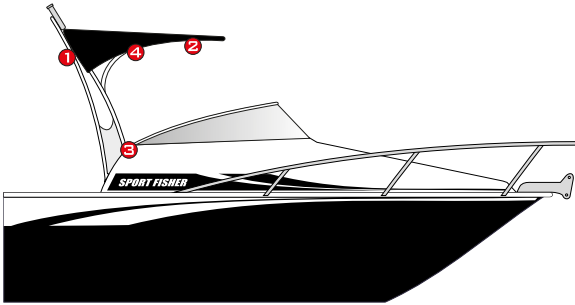
ALL BAIT BOARD INSERTS ARE RECOMMENDED TO BE REMOVED WHILE TRAVELLING.



LOWERING BIMINI FRAME

REMOVING / LOWERING SPORT TOP

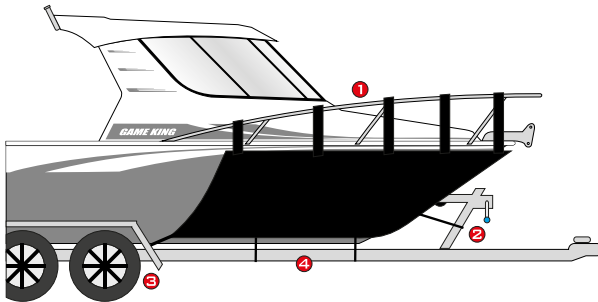
1. UNDO DOMES.
2. UNDO ZIP ON THE UNDERSIDE.
3. UNDO PIVOT BOLT, THEN GENTLY FOLD DOWN.
4. UNDO THUMB SCREW, THEN GENTLY FOLD DOWN.



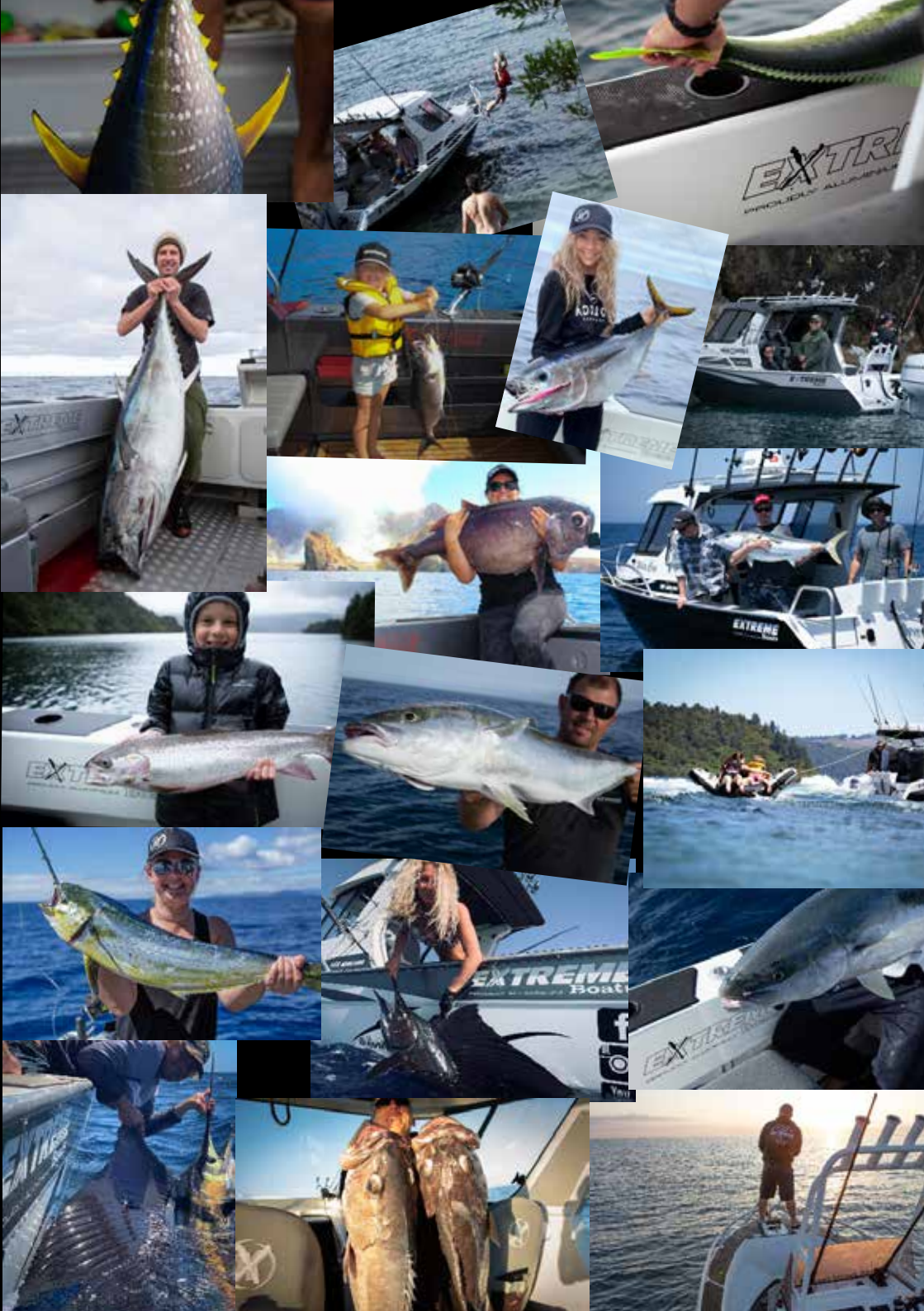
IMPORTANT: ENSURE COVER IS FULLY ATTACHED FOR TRAVEL.

ATTACHING THE STONE CHIP COVER AFTER FIRST FITMENT

1. ATTACH BOW RAIL CLIPS.
2. ATTACH FRONT BUNGEE AROUND WINCH POST.
3. ATTACH BACK BUNGEE AROUND TRAILER ARCH.
4. ATTACH REMAINING BUNGEEES TO TRAILER EYELETS.



IMPORTANT: ENSURE COVER IS FULLY ATTACHED FOR TRAVEL.





NEW ZEALAND'S MOST AWARDED ALUMINIUM BOATS

WWW.EXTREMEBOATS.CO.NZ